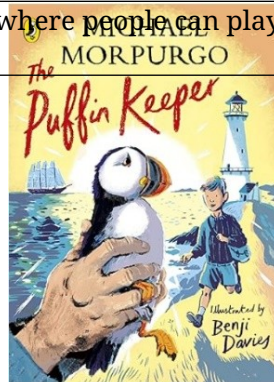
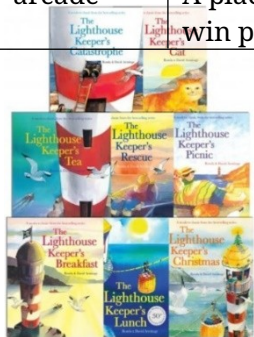


Year 2 Summer 2 Knowledge Bank

The Seaside

Vocabulary	Definition
coast	The place where the land meets the sea.
beaches	Areas of sand or pebbles next to the sea where people can play and relax.
cliffs	Very steep, high rocks that rise above the sea or land.
headlands	Pieces of land that stick out into the sea.
bays	Curved areas where the sea goes into the land, making a sheltered place.
caves	Large holes or spaces in rocks that you can sometimes walk into.
sand dunes	Hills or mounds of sand made by the wind near a beach.
harbour	A safe place where boats can stop and be protected from rough water.
slipway	A sloping ramp used to move boats into or out of the water.
breakwater	A wall built in the sea to stop big waves and protect boats.
lighthouse	A tall tower with a bright light that helps ships find their way safely.
port	A place where ships and boats load and unload people or goods
promenade	A path beside the sea where people can walk and enjoy the view.
pier	A long structure that stretches out over the water for walking, fishing, or docking boats.
beach	An area of sand, pebbles, or rocks beside the sea.
arcade	A place with fun games and machines where people can play and win prizes.



Knowledge

- The coast is the boundary where land meets seas
- Physical features of the coast include beaches, cliffs, headlands, bays, caves, sand dunes
- Human features of the coast include harbour, slipway, breakwater, lighthouse, port, promenade, pier, café, beach hut, arcade
- Grace Darling was a significant figure who rescued a group of people from a shipwreck in Victorian times
- The RNLI is a charity dedicated to saving lives at sea

Skills

- Define what the coast is.
- Locate coasts in the UK.
- Describe how people use the coast.
- Describe how the local coast has been used.
- Use Google Maps to explore the different seaside resorts from around the UK.
- Identify the similar features in UK seaside resorts.
- Use photographs of human and physical features and label them on a map of a local seaside resort.
- Use a simple map of a local seaside resort and plan a route identifying key locations, interpreting map symbols and using compass directions.
- Use photographs to compare seaside towns in the UK now and in the Victorian times.